



# AUCTION

LEADING THE INDUSTRY SINCE 1945

Thursday – October 26, 2017 – 10:00 AM

Real Estate Sells At 10:30 AM

## Haythorn LLC - Attn: Nature Lovers – Loads Of Wildlife

46+-Acres Secluded Wooded Acreage – Development Potential – Income Producing Property - Boardman Twp. & Schools – Mahoning Co. – Family Owned Since 1937 – Gas & Oil Minerals Transfer Plus 400,000 Cu. Ft. Free Gas – Sold In Two Parcels

Also Selling: Tools – Household – Trailer – 100+ Antique Plumber Torches

Parents have passed away, absolute auction, all sells to the highest bidder on location:

**4208, 4210, & 4212 Hopkins Rd., Boardman, OH 44511**

Directions: Take Rt. 62 (Canfield Rd.) east of Tippecanoe Rd. to Hopkins Rd. and south – or – (Rt. 625) Lockwood Blvd. north of Rt. 224 to Shields and left to Hopkins. Watch for KIKO signs.

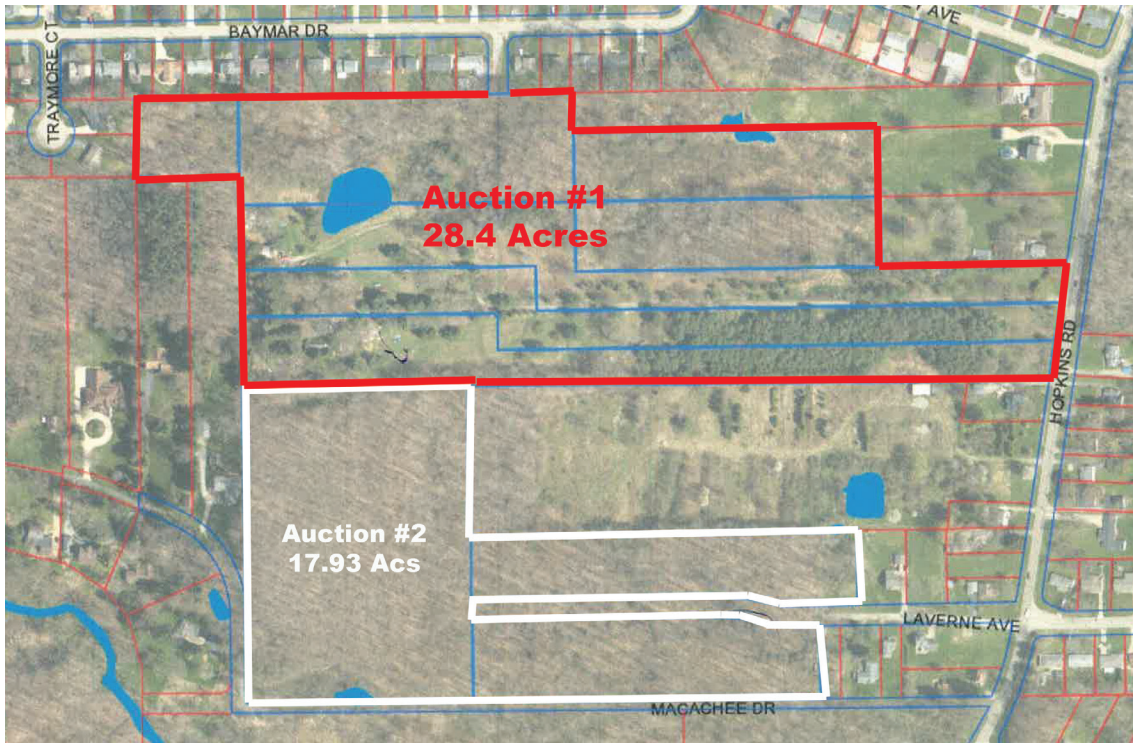


Information is believed to be accurate but not guaranteed.



330.455.9357 • [kikoauctions.com](http://kikoauctions.com)





**Auction #1** – 28.4 Acres with Three Handyman Homes – Free Gas – Spring-Fed Pond – Wooded – Unique Hideaway – Included Century Two-Story, 2,200 Sq. Ft. with Two-Car Garage – 1,488-Sq.-Ft. Ranch With Two-Car Garage – 1,850-Sq.-Ft. One-Half Story With Two-Car Garage – Good 34 X 50 Pole Building With Concrete Lot Plus Other Outbuildings – Very Secluded Wooded Setting – Back Long Private Drive Off Hopkins Plus Access Of Baymar Drive from north. Water & Sewer Off Baymar Drive – All With Separate Utilities – Good Rental Income – Two Are Presently Rented \$550 Each Home – Two Story Duplex Was \$600 & \$500 Plus Utilities

**Auction #2** – 17.93-Acres Wooded Land With Gas & Timber Rights - Very Secluded – Access Off Hopkins to Laverne Ave. Which Dead-ends into property and Macachee Private Drive Off Hopkins

**Preview**

**Wed. Oct. 25, 3-5 PM or sale morning.**

**TERMS ON REAL ESTATE:** 10% down auction day, balance due at closing. A 10% buyer's premium will be added to the highest bid to establish the purchase price, which goes to the seller. Any desired inspections must be made prior to bidding. All information contained herein was derived from sources believed to be correct. Information is believed to be accurate but not guaranteed.

**Collectibles – Household:** 100 plus antique plumber torches of all kinds – antique floor-model porcelain scale – 2 Flex Flyer sleds – 5-gal. milk cans – bowl and pitcher – glass and china – vases – bowls – C-roll top desk – bedroom furniture – dressers – old cash register – typewriter – Spinet piano – canning jars – sewing machine – hub caps – trunk – general household items – ornate stove – 3 wood benches – books – picture frames – lots of other misc.



**Trailer – Tools – Building Material – Etc:** 24" Thicken ind. planner – older Hudson 21' Beaver-tail dual tandem trailer – Air Co. welder #160 dip stick with tanks – misc. power tools – drill press – bench grinder – manual tire changer – Kerosene torpedo heaters – combo. safe – draftsman table – cabinets – hand carts – large wood pulley – weed eater – old doors – porch post – misc. marble – granite – flag stone – radial arm saw – bench grinder – rail fence – scrap iron – lots of misc.

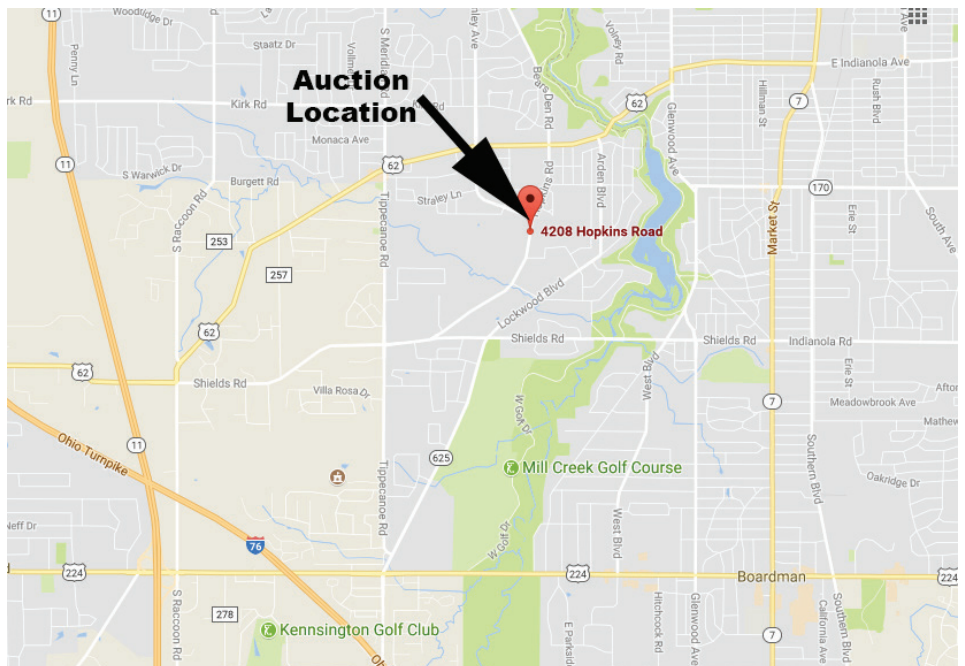
**TERMS ON CHATELS:** Driver's license or State ID required to register for bidder number. Cash, Check, Debit Card, Visa, or Master Card accepted. 4% buyer's premium on all sales; 4% waived for cash or check. Information is believed to be accurate but not guaranteed.

**Auctioneer/Realtor:**

Russell T. (Rusty) Kiko, Jr., C.A.I., ext 115,  
330-495-0923

**Auction By Order Of:**

Haythorn LLC, Anderson Family



**330.455.9357 • kikoauctions.com**

